

ORDERING INFORMATION					
					Packaged five per unit box
CATALOGUE NUMBER	TIP DESIGN	LENGTH (cm)	DIAMETER (inch)	TIP STIFFNESS (LOAD) (Gram)	TIP SHAPE
CGW185S-0S	Shaping ribbon	185	0.014	0.6 (floppy)	Straight
CGW185S-1S	Shaping ribbon	185	0.014	1.0 (supersoft)	Straight
CGW185S-2S	Shaping ribbon	185	0.014	2.0 (soft)	Straight
CGW185S-0J	Shaping ribbon	185	0.014	0.6 (floppy)	J - shape
CGW185S-1J	Shaping ribbon	185	0.014	1.0 (supersoft)	J - shape
CGW185S-2J	Shaping ribbon	185	0.014	2.0 (soft)	J - shape
CGW185C-0S	Core to tip	185	0.014	0.6 (floppy)	Straight
CGW185C-1S	Core to tip	185	0.014	1.0 (supersoft)	Straight
CGW185C-2S	Core to tip	185	0.014	2.0 (soft)	Straight
CGW185C-0J	Core to tip	185	0.014	0.6 (floppy)	J - shape
CGW185C-1J	Core to tip	185	0.014	1.0 (supersoft)	J - shape
CGW185C-2J	Core to tip	185	0.014	2.0 (soft)	J - shape
CGW300S-0S	Shaping ribbon	300	0.014	0.6 (floppy)	Straight
CGW300S-1S	Shaping ribbon	300	0.014	1.0 (supersoft)	Straight
CGW300S-2S	Shaping ribbon	300	0.014	2.0 (soft)	Straight
CGW300S-0J	Shaping ribbon	300	0.014	0.6 (floppy)	J - shape
CGW300S-1J	Shaping ribbon	300	0.014	1.0 (supersoft)	J - shape
CGW300S-2J	Shaping ribbon	300	0.014	2.0 (soft)	J - shape
CGW300C-0S	Core to tip	300	0.014	0.6 (floppy)	Straight
CGW300C-1S	Core to tip	300	0.014	1.0 (supersoft)	Straight
CGW300C-2S	Core to tip	300	0.014	2.0 (soft)	Straight
CGW300C-0J	Core to tip	300	0.014	0.6 (floppy)	J - shape
CGW300C-1J	Core to tip	300	0.014	1.0 (supersoft)	J - shape
CGW300C-2J	Core to tip	300	0.014	2.0 (soft)	J - shape

MetisTM

PTCA GUIDEWIRE



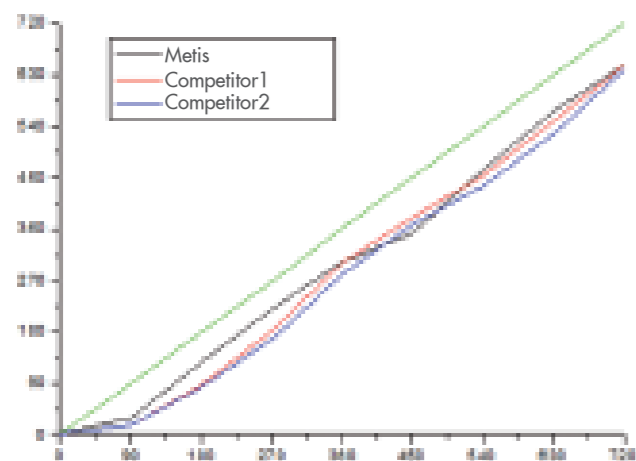
THIS LINE, YOU CAN FOLLOW FOREVER

MetisTM

PTCA GUIDEWIRE

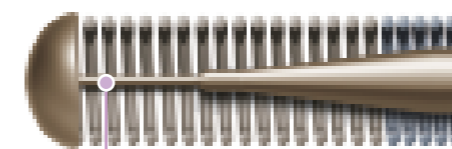
- Proprietary welding technique results in a single core construction: a Nitinol distal core with a stainless steel proximal shaft
 - Removes abrupt transitions
 - Ensures torque is transmitted along the central axis
- Different tip design provides options for easy tip shaping and superior tip shape retention
 - Shaping ribbon - enhance tip flexibility and shapeability
 - Core to tip – excellent tip shape retention and force transmission
- Durable Hydrophilic coating reduces friction for improved navigation in tortuous vessels

Comparison of torquability



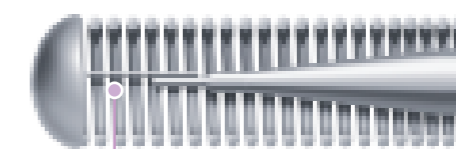
ideal 1:1 torquability

Approximate 1:1 torque response facilitates steerable navigation and precise guidewire control.



Nitinol Core-to-tip design

- Provides excellent tactile feedback and force transmission



Shaping ribbon design

- Enhances tip flexibility and shapeability



- Provides superior flexibility, torquability and trackability

Distal Nitinol core

- This unique connection combines the strength of the stainless steel and the flexibility of the nitinol

Matchlink™ Welding technique

3cm Radiopaque coil

- Good visibility, provides control for lesion measurement

Hydrosin™ Coating

- Hydrophilic coating, makes the surface very smooth, easy to access and cross complex lesions

- High performance stainless steel core, provides excellent support and flexibility

- Atraumatic tip, connection strength >2.45N

PRODUCT DESCRIPTION

Core Material	Nitinol+Stainless Steel
Guidewire Diameter	0.014"
Coating on distal part	Hydrophilic coating
Coating on proximal part	PTFE coating
Tip Design	Core to tip & Shaping ribbon
Tip stiffness	0.6g / 1.0g / 2.0g
Core support strength	Moderate
Radiopaque coil	Platinum / 3cm
Proximal Extension	185cm version can be extended.