

PRODUCT DESCRIPTION

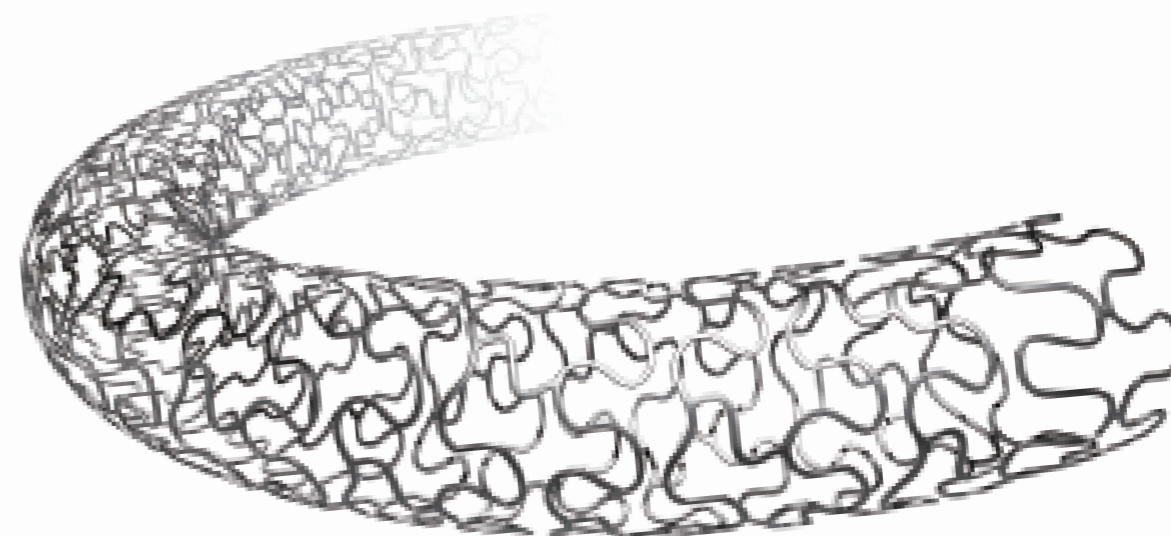
Drug	Rapamycin (Sirolimus)
Material	Stainless Steel
Strut thickness	90µm
Coating thickness	6µm
Metal-artery ratio	15% -18%
Balloon tip profile	0.017" (0.43mm)
Lowest crossing profile	0.035" (0.90mm)
Nominal inflation pressure	8atm
Recoil	<2%

ORDERING INFORMATION

STENT LENGTH (mm)	STENT DIAMETER (mm)				
	2.5	2.75	3	3.5	4
12	CSES2512	CSES2712	CSES3012	CSES3512	CSES4012
15	CSES2515	CSES2715	CSES3015	CSES3515	CSES4015
18	CSES2518	CSES2718	CSES3018	CSES3518	CSES4018
21	CSES2521	CSES2721	CSES3021	CSES3521	CSES4021
24	CSES2524	CSES2724	CSES3024	CSES3524	CSES4024
29	CSES2529	CSES2729	CSES3029	CSES3529	CSES4029
33	CSES2533	CSES2733	CSES3033	CSES3533	CSES4033
36	CSES2536	CSES2736	CSES3036	CSES3536	CSES4036

# Miranda<sup>TM</sup>

SIROLIMUS – ELUTING CORONARY STENT SYSTEM



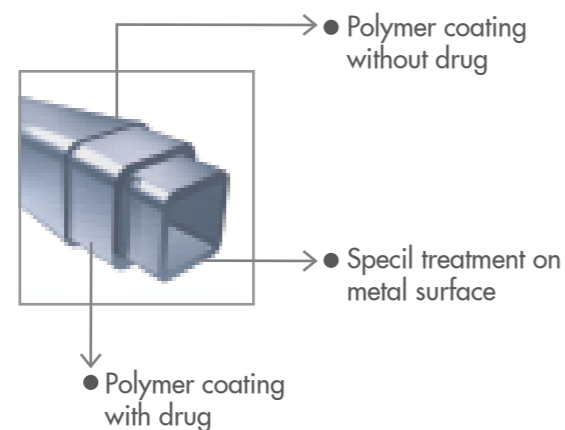
COMBINATION OF A PROVEN EFFECTIVE ANTI-PROLIFERATIVE DRUG – SIROLIMUS  
ON AN IMPROVED DESIGN PLATFORM

# Miranda<sup>TM</sup>

SIROLIMUS -ELUTING CORONARY STENT SYSTEM

New polymer coating and design of the stent that makes a difference.....

Special PBMA/PEVA Polymer

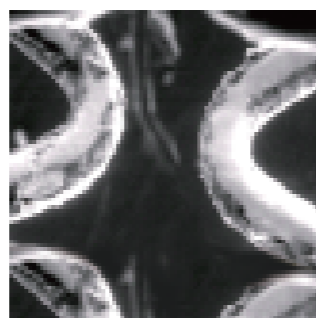


Resulting in an ultra-thin (only 6µm) layer that enhances the deliverability of the stent

No crack-bridging surface



Microscopic view of Miranda



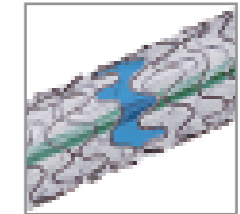
Microscopic view of competitor

When side branches matter....

Sinusoidal wave and 3-3-3 link design provides optimal tissue scaffolding yet strong radial strength



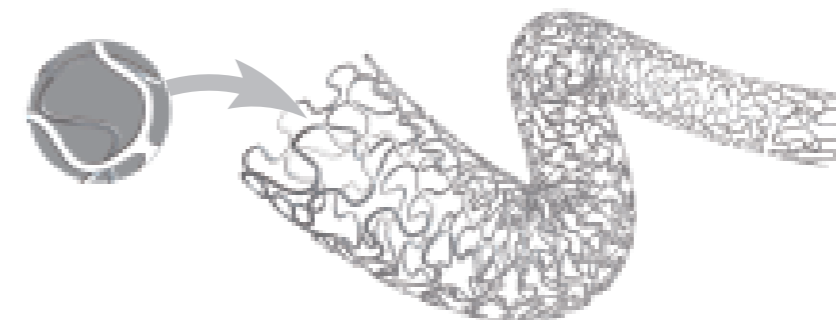
No risk of sacrificing the side branches.....



STENT DIAMETER (mm)	MAX. CIRCULAR ACCESS DIAMETER (mm)	UNSUPPORTED SURFACE AREA (mm <sup>2</sup> )
2.5	0.98	3.6
2.75	1.08	3.9
3.0	1.23	4.3
3.5	1.37	5.0
4.0	1.57	5.7

The thinner strut advantages....

Significantly reduces both clinical and angiographic restenosis rate  
90µm stainless steel strut thickness provides a high radial strength while retaining the conformability and deliverability of the stent



Finally a long enough stent to cover the lesions.....

Broad range of stent lengths to cover from focal to long lesions....

- 12mm to 36mm length to meet all stenting needs